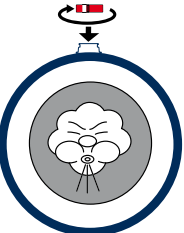




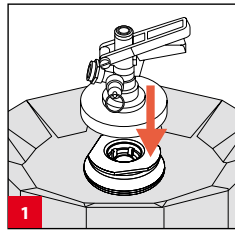
CONNECTING

Instructions for connecting the coupler

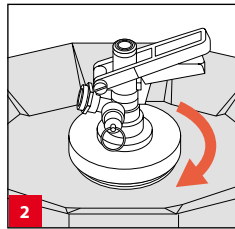
Connecting: To connect the coupler to the keg, follow steps 1 to 3.
 Disconnecting: To disconnect: repeat step 1 to 3 in reversed order and opposite direction.



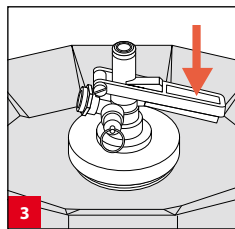
STEP 1
 Ensure that the handle is in the raised position and place the three lugs of the dispense head in the three slots of the keg closure.



STEP 2
 Gently turn the dispense head clockwise until it goes no further.



STEP 3
 Unlock the handle by squeezing the two parts of the handle and push it down.



STEP 4
 Adjust the dispensing pressure.



		Minimum dispense pressures (max. 3,5 bar / 51 PSI !)							
Keg temperature:		5°C 41°F	10°C 50°F	15°C 59°F	20°C 68°F	25°C 77°F	30°C 86°F	35°C 95°F	
high carbonization	6,5 g/ltr CO2	1,6 bar 23 PSI	2 bar 30 PSI	2,5 bar 36 PSI	3,1 bar 45 PSI	3,5 bar 51 PSI	4,2 bar 61 PSI	4,9 bar 71 PSI	
	6 g/ltr CO2	1,4 bar 20 PSI	1,8 bar 26 PSI	2,2 bar 32 PSI	2,8 bar 41 PSI	3,3 bar 48 PSI	3,8 bar 55 PSI	4,5 bar 65 PSI	
medium carbonization	5,5 g/ltr CO2	1,2 bar 17 PSI	1,6 bar 23 PSI	2 bar 29 PSI	2,4 bar 35 PSI	2,9 bar 42 PSI	3,5 bar 51 PSI	4,0 bar 58 PSI	
	5 g/ltr CO2	1 bar 15 PSI	1,3 bar 19 PSI	1,7 bar 24 PSI	2,1 bar 30 PSI	2,6 bar 38 PSI	3,1 bar 45 PSI	3,6 bar 52 PSI	
low carbonization	4,5 g/ltr CO2	0,7 bar 10 PSI	1,1 bar 16 PSI	1,4 bar 20 PSI	1,8 bar 26 PSI	2,2 bar 32 PSI	2,6 bar 38 PSI	3,1 bar 45 PSI	
	4 g/ltr CO2	0,5 bar 7 PSI	0,8 bar 12 PSI	1,1 bar 16 PSI	1,5 bar 22 PSI	2 bar 30 PSI	2,3 bar 34 PSI	2,3 bar 33 PSI	

At this temperature and carbonization the kegs need to be cooled

Warnings:

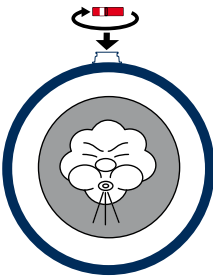
- A filled keg is pressurized. Do not puncture a filled keg.
- The dispensing pressure must never exceed 3.5 bar.
- Once wine dispensing has commenced, the keg should not be moved to prevent damage to the bag.



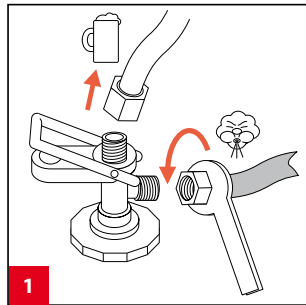


CONNECTING TO DISPENSER

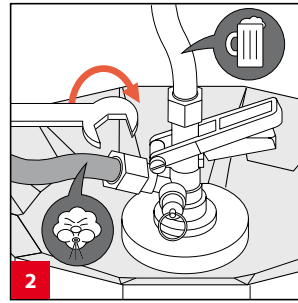
Instructions for connecting the coupler to the dispenser



STEP 1
Disconnect the CO2 / Air- and beverage hose from your existing coupler.



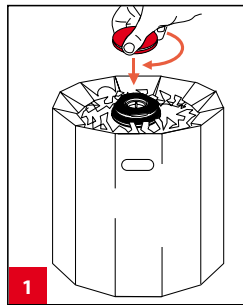
STEP 2
Connect the CO2 / Air- and beverage hose to the coupler.



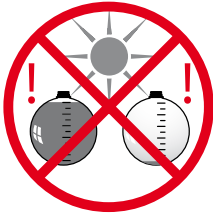
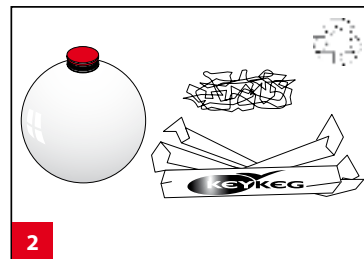
DISPOSING

Instructions for disposing of the empty keg

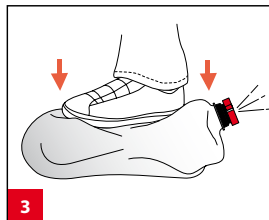
STEP 1
Release the pressure by using only the deflating tool.



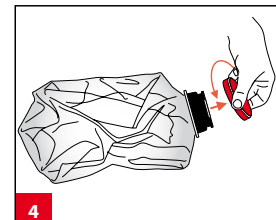
STEP 2
Separate plastic and cardboard.



STEP 3
Gradually squeeze the air out of the bag using your foot.



STEP 4
The end result.



Keg and the environment

This keg has been developed as a sustainable solution that is 100% compliant with the essential environmental requirements of the European Union. It has been developed with both material recycling and energy reuse in mind. This keg is an important advancement for the environment, people and businesses.